

# 2013 Bond Update

February 18, 2014

# Bond Oversight

- **Bond-Construction Team**
  - Clark Ealy
  - Glynn Walker
  - Jon Hall
  - Debra Parks
  - Mark Pantel
- **Board Approval**
  - Construction Delivery Method
  - Selection of Architect and General Contractor
  - Any purchase of \$50,000 or greater

# Overall Bond Budget

- **Sale of \$83.5 Million approved by Board on January 21, 2014**
- **Received funds today**
- **Overall budget allocated into various projects**

**College Station ISD**

2013 Bond Program Summary - **Actual Expenditures**

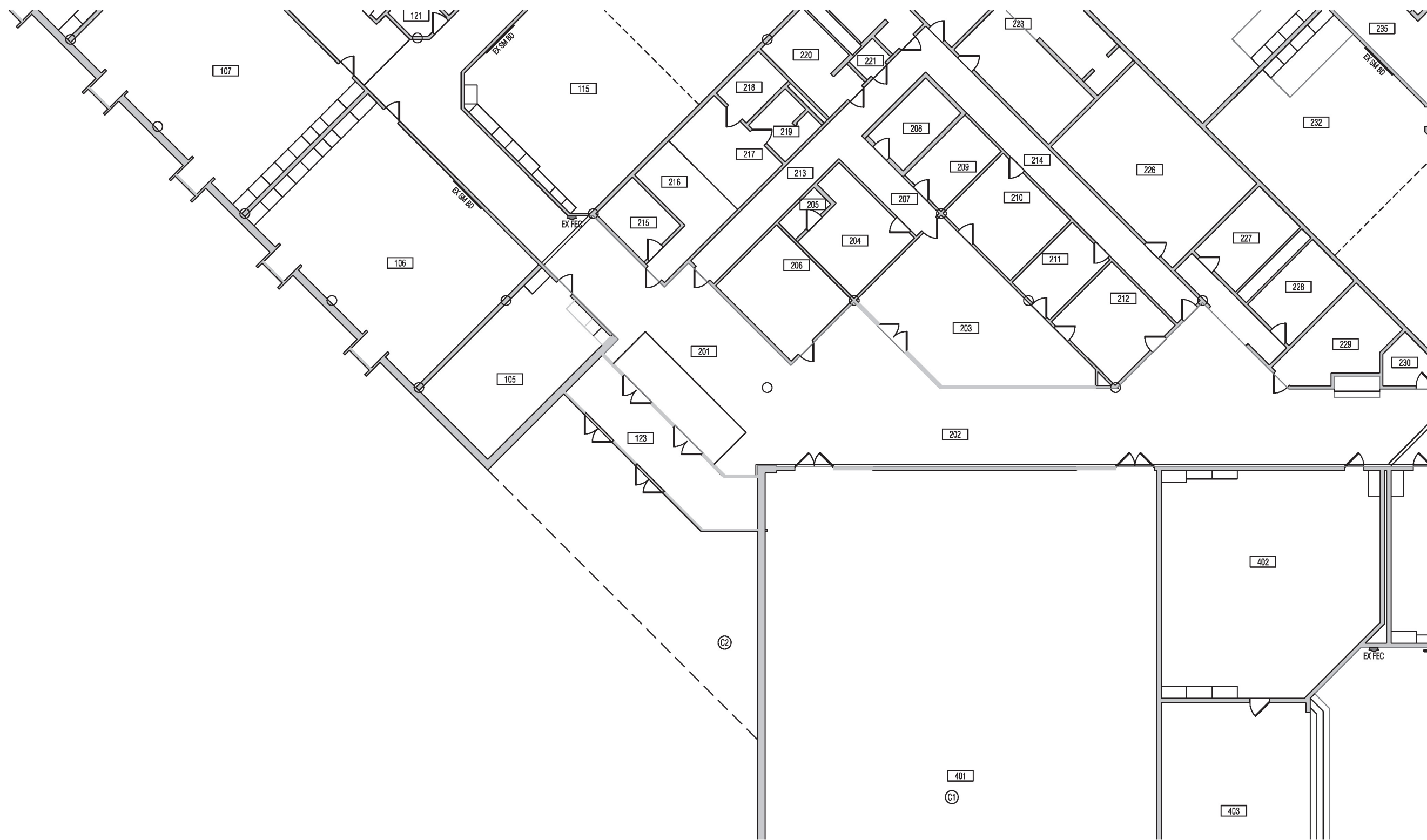
1/13/2014

							<i>Ongoing Pro</i>
Project #, Org, Subobject	A6		A7	A3	B1	A4	A8
	Security Vestibules		Elementary #9	AMCHS Improvements	Purchasing Warehouse Facility	Alt. Learning Center	Differed Maintenance
<b>Fund: 6913</b>	Construction	Technology					
<b>Initial Project Budget</b>		<b>3,900,000</b>	<b>20,000,000</b>	<b>3,500,000</b>	<b>7,500,000</b>	<b>15,500,000</b>	<b>12,000,000</b>
Transfers between projects from initial budget versus board approved budget							
<b>Amount to be Approved by the Board</b>	<b>0</b>	<b>3,900,000</b>	<b>20,000,000</b>	<b>3,500,000</b>	<b>7,500,000</b>	<b>15,500,000</b>	<b>12,000,000</b>

<b>- Fund 6913</b>						
<b>jects</b>						
CI	A9	55	(93)	TK	50	
Capital Improvements	Central Office Facility	Land Acquisition	Buses	Technology	Construction Department	Totals
	6,500,000	5,500,000	3,000,000	6,100,000	0	83,500,000
						0
						0
						0
						0
						0
						0
						0
						0
						0
						0
						0
						0
						0
						0
						0
						0
						0
						0
						0
						0
						0
<b>0</b>	<b>6,500,000</b>	<b>5,500,000</b>	<b>3,000,000</b>	<b>6,100,000</b>	<b>0</b>	<b>83,500,000</b>

# Security Vestibules

- Design work concluded (4 campuses) moving to construction documents
  - Carrying an allowance right now for PCES
- Bid Day is Tuesday, 3/11/14
- Guaranteed Maximum Price (GMP) at March 18<sup>th</sup> Board meeting



**EXISTING ENTRY FLOOR PLAN**

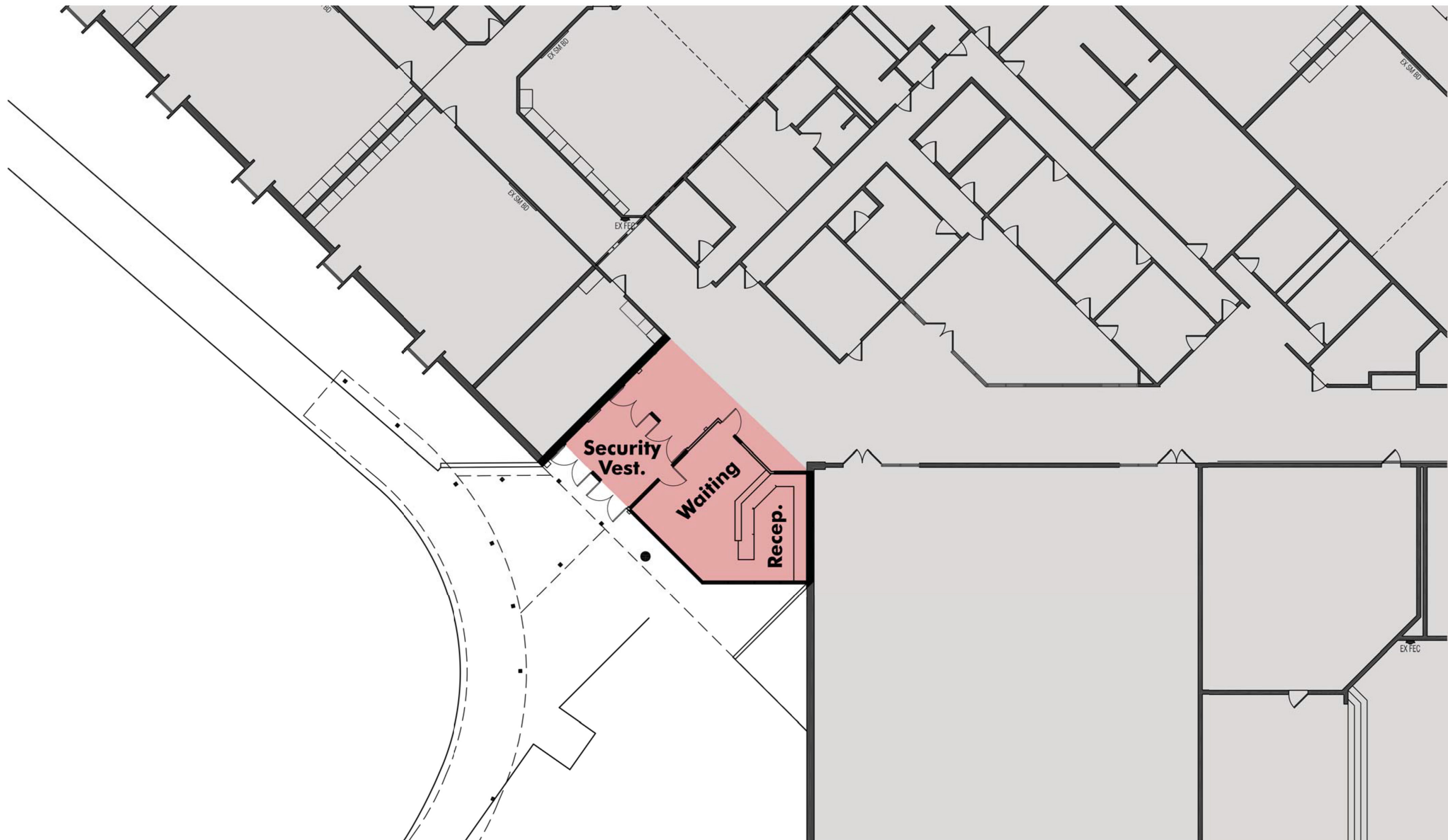
••• Security Vestibules



**Southwood Valley Elementary - Security Vestibule Addition**

COLLEGE STATION INDEPENDENT SCHOOL DISTRICT

Tuesday, February 18, 2014



••• Security Vestibules

**ENTRY RENOVATIONS FLOOR PLAN**

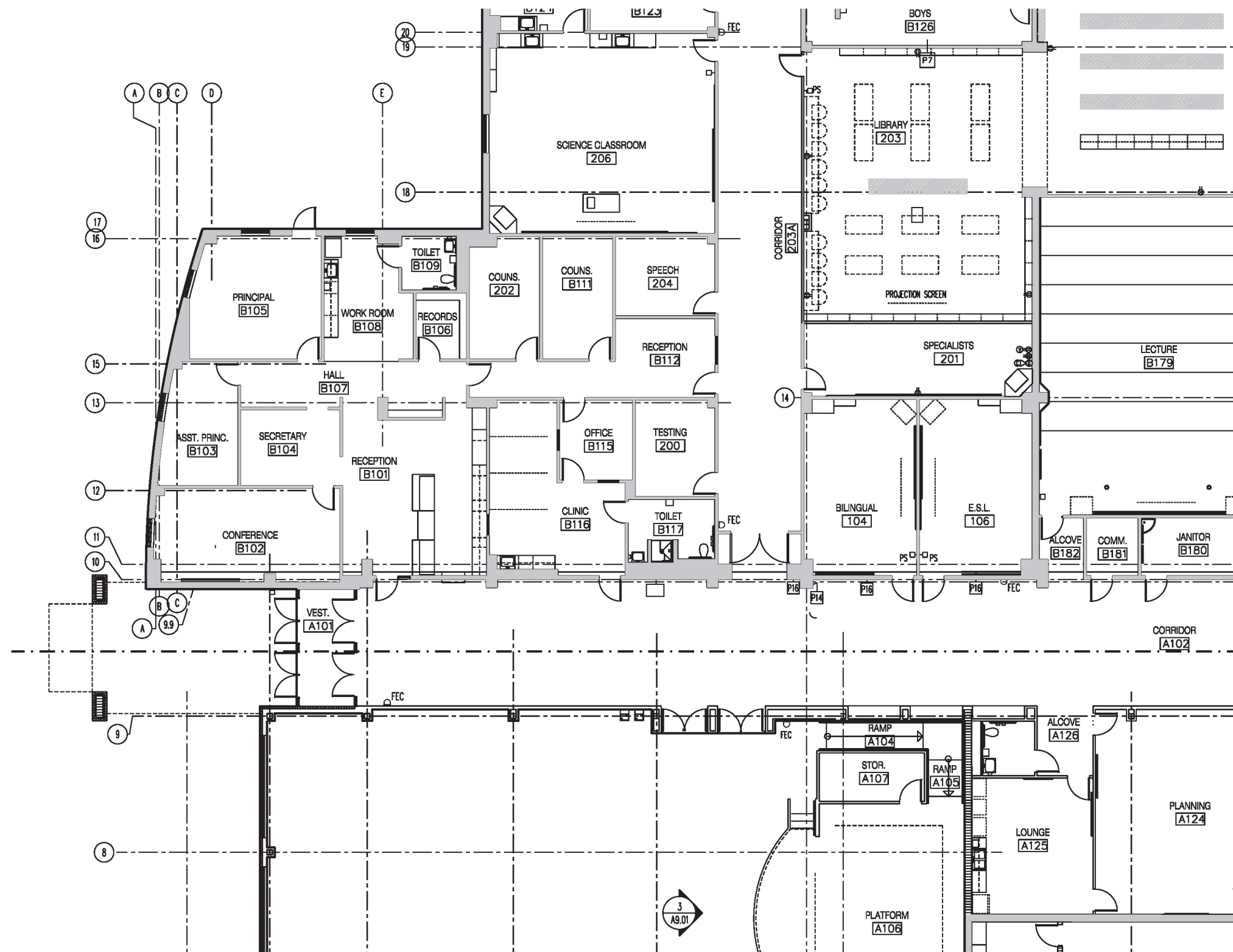


**Southwood Valley Elementary - Security Vestibule Addition**

COLLEGE STATION INDEPENDENT SCHOOL DISTRICT

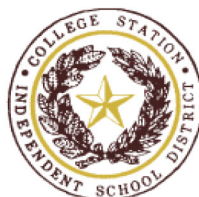
Tuesday, February 18, 2014





**EXISTING ENTRY FLOOR PLAN**

••• Security Vestibules



**Cypress Grove Intermediate School - Security Vestibule Addition**

COLLEGE STATION INDEPENDENT SCHOOL DISTRICT

Tuesday, February 18, 2014



••• Security Vestibules

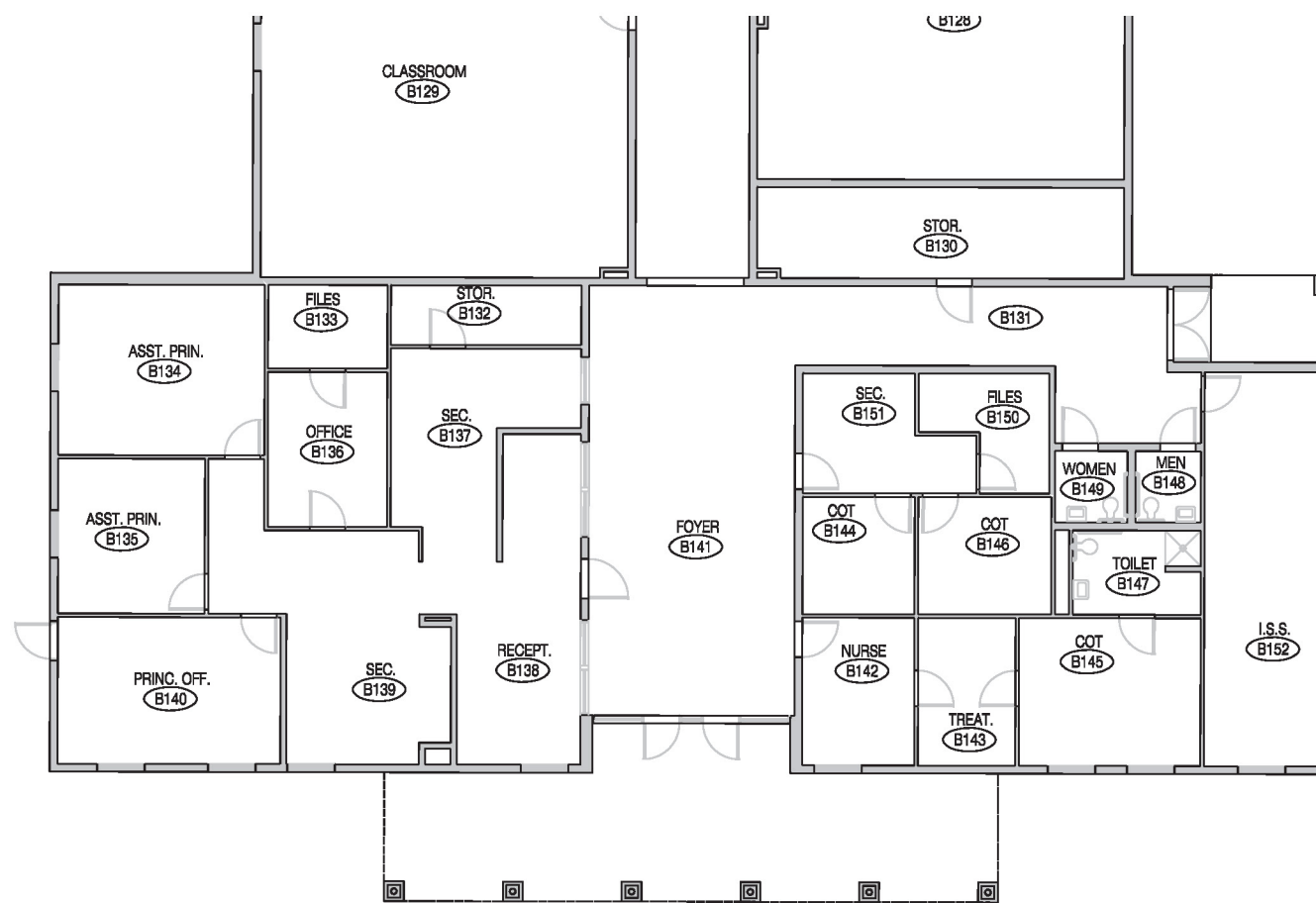
**ENTRY RENOVATIONS FLOOR PLAN**



**Cypress Grove Intermediate School - Security Vestibule Addition**

COLLEGE STATION INDEPENDENT SCHOOL DISTRICT

Tuesday, February 18, 2014



Security Vestibules

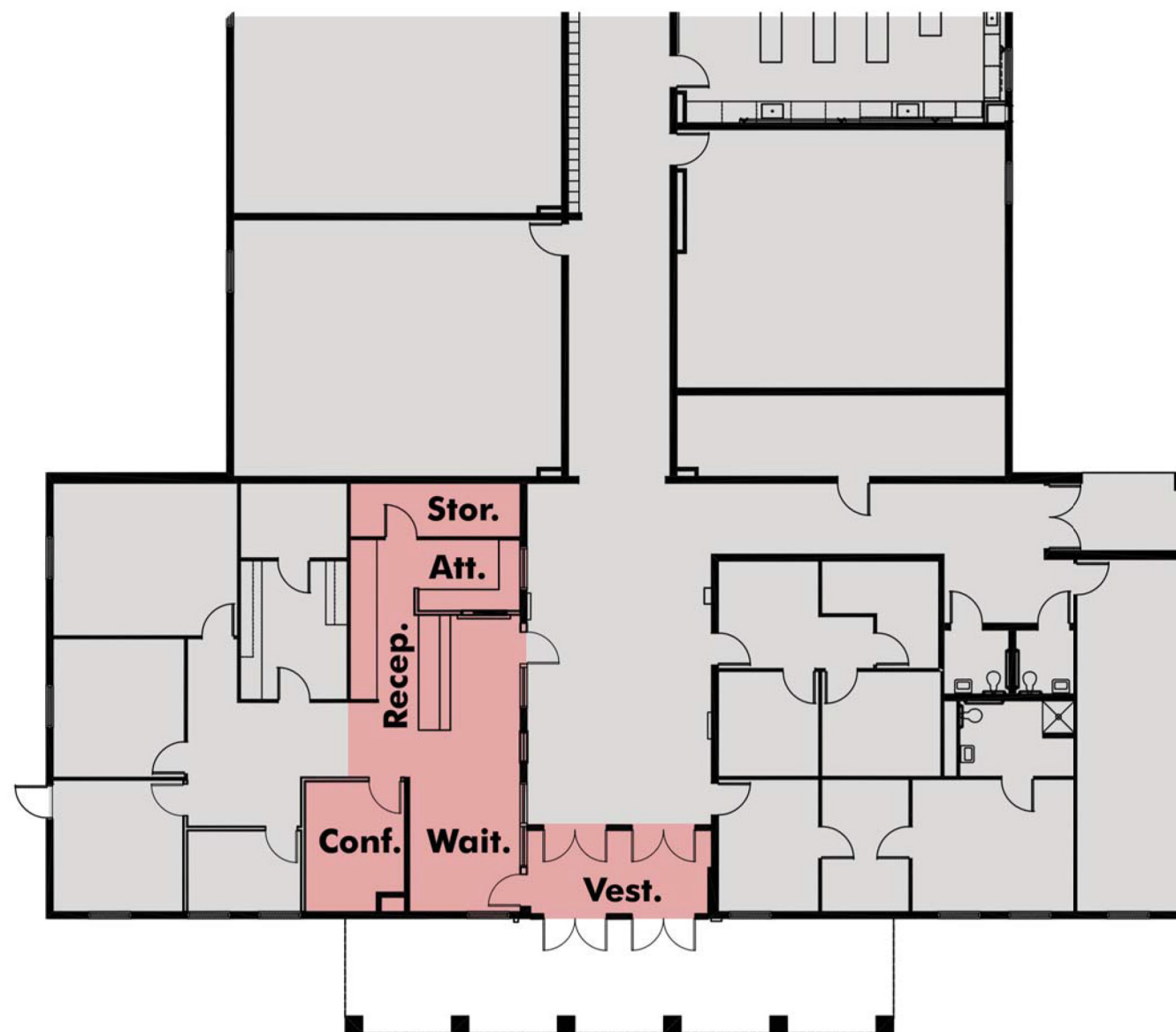
**EXISTING ENTRY FLOOR PLAN**



**A&M Consolidated Middle School - Security Vestibule Addition**

COLLEGE STATION INDEPENDENT SCHOOL DISTRICT

Tuesday, February 18, 2014



Security Vestibules

**ENTRY RENOVATIONS FLOOR PLAN**



**A&M Consolidated Middle School - Security Vestibule Addition**

COLLEGE STATION INDEPENDENT SCHOOL DISTRICT

Tuesday, February 18, 2014



••• Security Vestibules

**EXISTING ENTRY FLOOR PLAN**



**College Station Middle School - Security Vestibule Addition**

COLLEGE STATION INDEPENDENT SCHOOL DISTRICT

Tuesday, February 18, 2014



••• Security Vestibules

**ENTRY RENOVATIONS FLOOR PLAN**



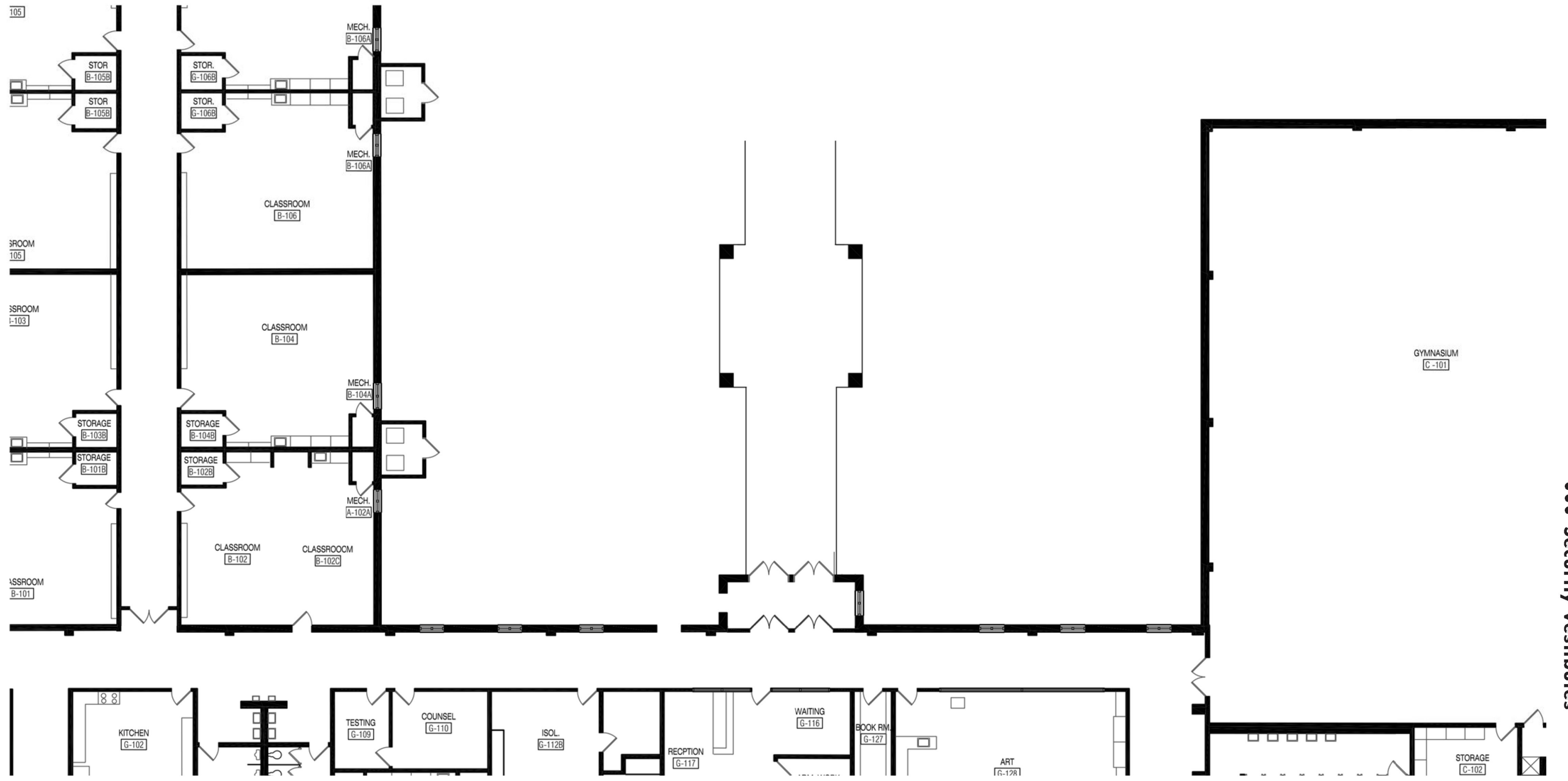
**College Station Middle School - Security Vestibule Addition**

COLLEGE STATION INDEPENDENT SCHOOL DISTRICT

Tuesday, February 18, 2014

# Security Vestibules

- **Pebble Creek vestibule will be bid later this spring**
  - **Design is outside of current footprint**
  - **Different subs: structural concrete, structural steel, roofing, etc.**
- **Project will still take place in summer 2014**
  - **Looking to be 90-95 days of construction**
  - **Set to be complete by end of September**



**EXISTING ENTRY FLOOR PLAN**

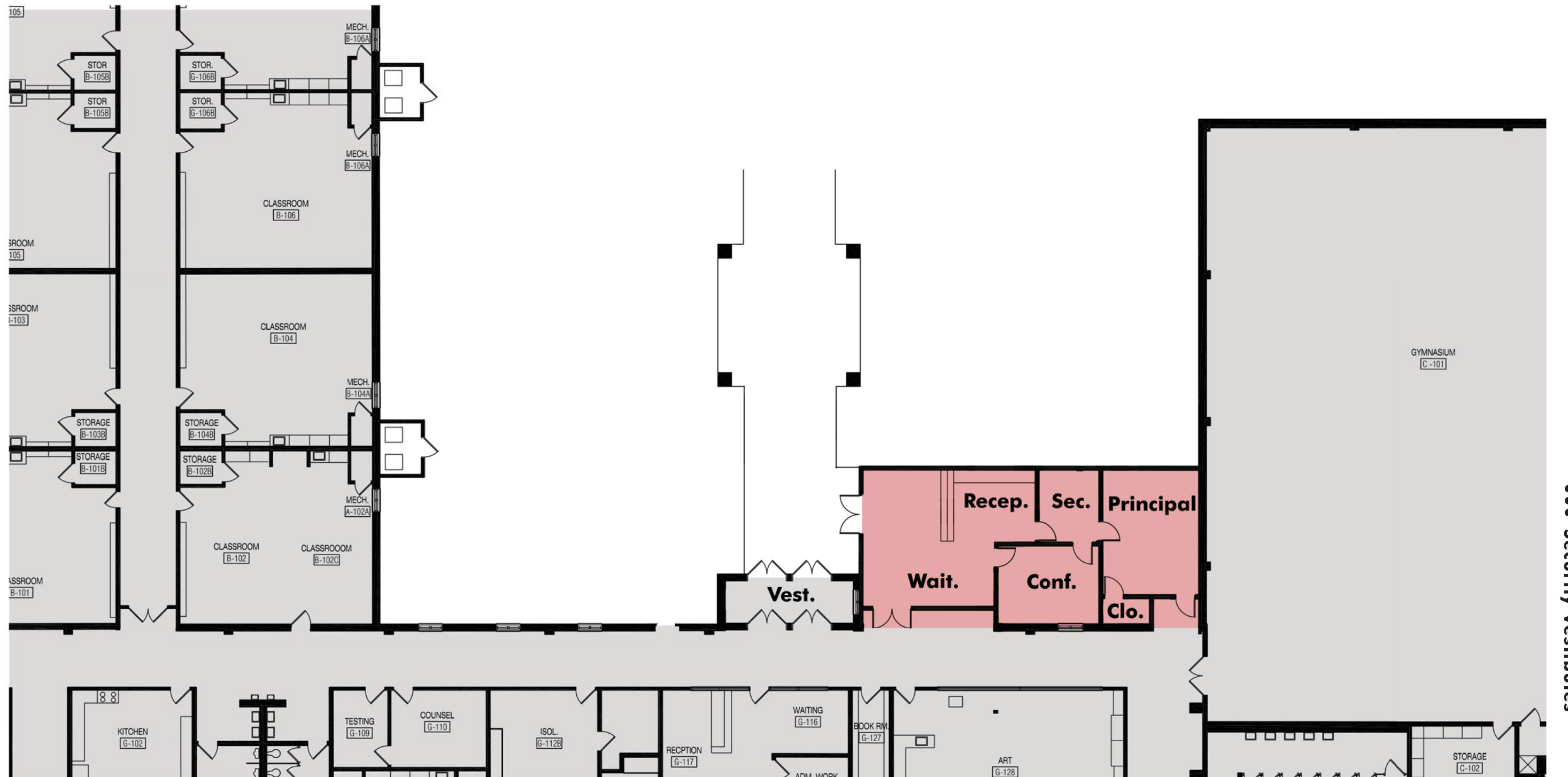


**Pebble Creek Elementary - Security Vestibule Addition**

COLLEGE STATION INDEPENDENT SCHOOL DISTRICT

Thursday, January 9, 2014





●●● Security Vestibules

**ENTRY RENOVATIONS FLOOR PLAN  
OPTION 'B'**



**Pebble Creek Elementary - Security Vestibule Addition**

COLLEGE STATION INDEPENDENT SCHOOL DISTRICT

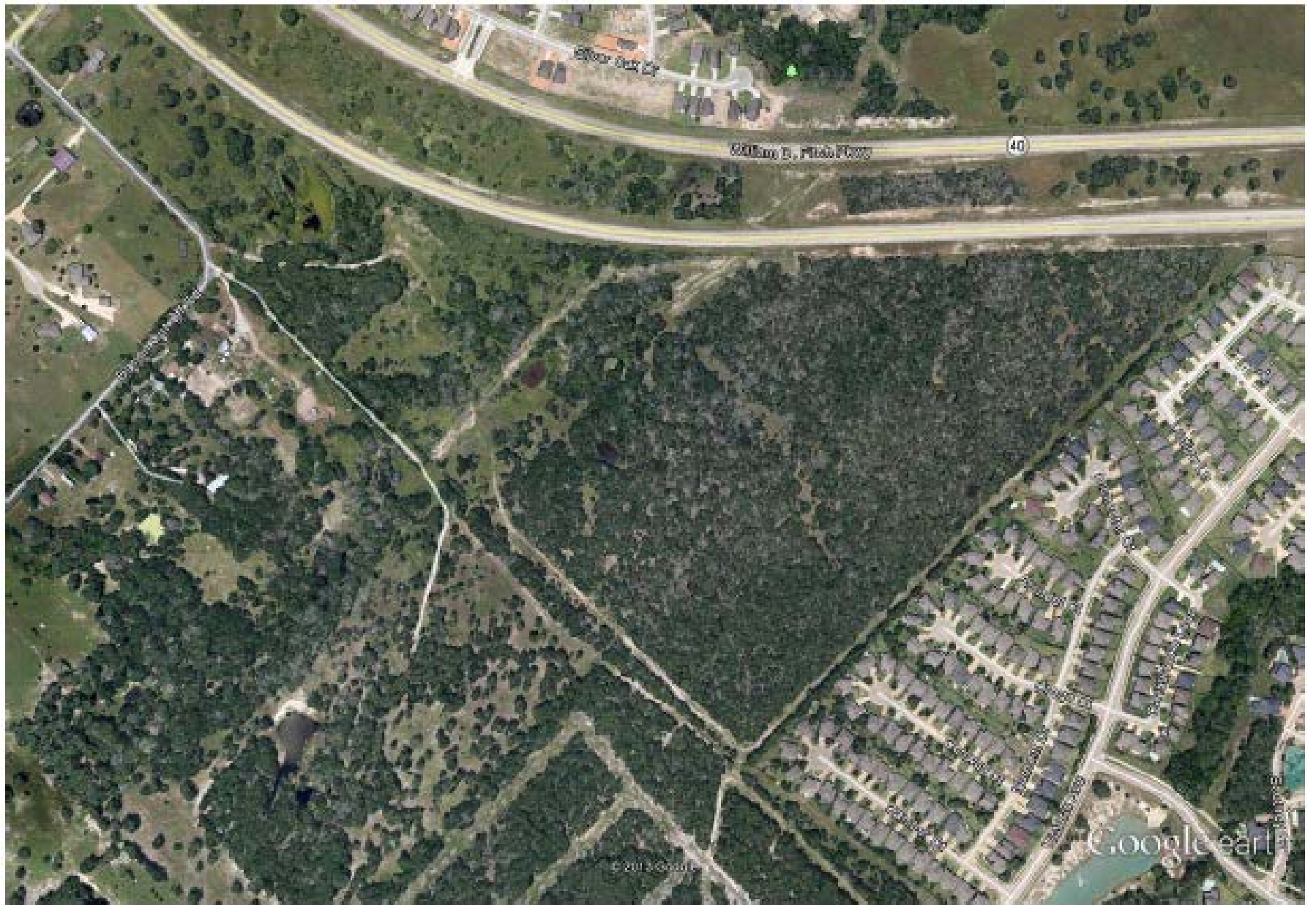
Thursday, January 16, 2014

# Elementary #9

- **Joint Development Agreement with French and Philips**
  - **WS Philips Parkway construction**
  - **Construction and emergency access roads**
  - **Water line**
- **City of College Station**
  - **Traffic Impact Analysis (TIA)**
  - **Working with us on platting and other timing issues**
  - **Oversize participation**
- **Closing Date for property – Late this month**

# Elementary #9

- Design Development (DD) 100% complete
- Schematic Design (SD) proceeding
  - Mechanical, electrical, technology, etc.
  - Drawings hit the street 3/5/14
- Bid Day is Thursday, 4/3/14
- Guaranteed Maximum Price (GMP) at April 15<sup>th</sup> Board meeting
- Name of campus announced – March Board Meeting
- Principal named – Targeting May





# ELEMENTARY SCHOOL #9

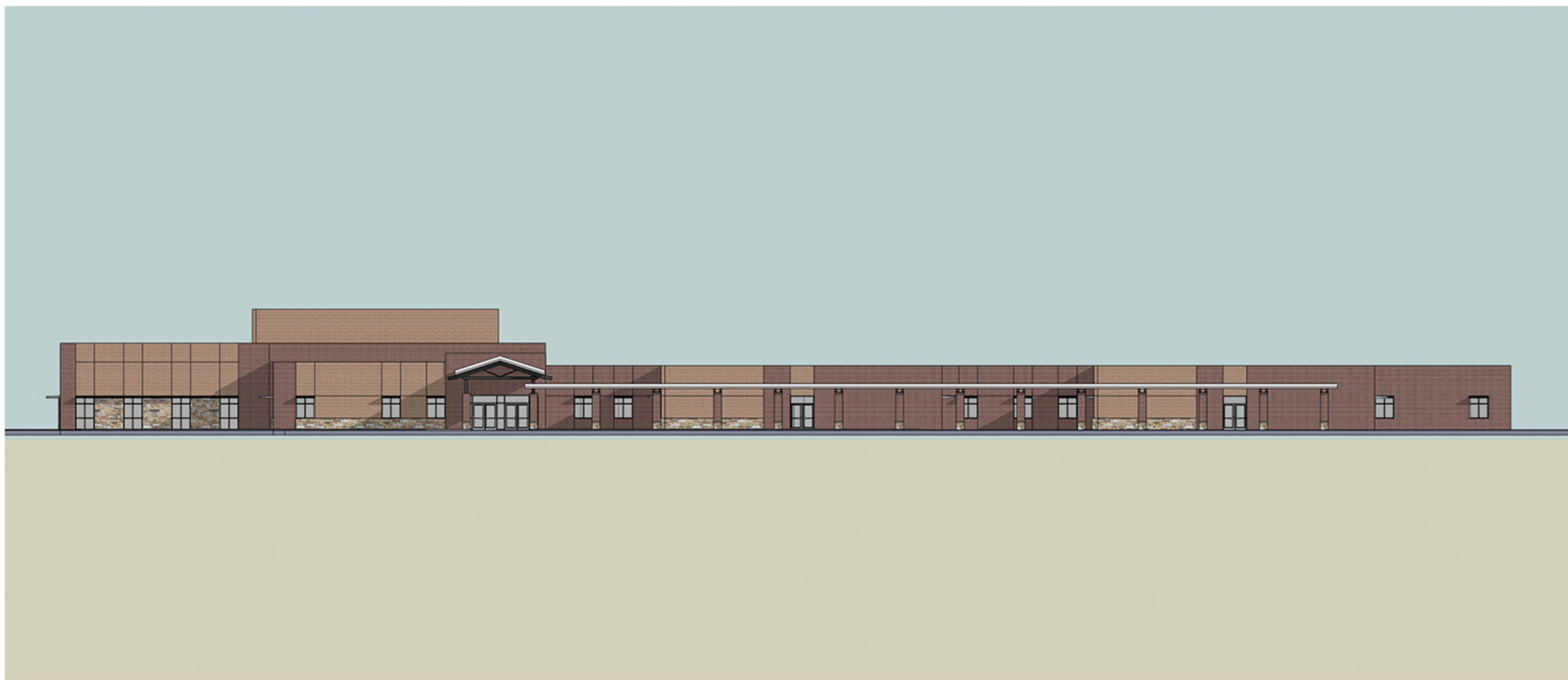
COLLEGE STATION INDEPENDENT SCHOOL DISTRICT





# ELEMENTARY SCHOOL #9

COLLEGE STATION INDEPENDENT SCHOOL DISTRICT



••• OPTION B







# New “Center for Alternative Learning”

- **Projected closing – February 28<sup>th</sup>**
- **Design Development continuing**
- **Construction Drawings released 5/15/14**
- **Bid Day is Thursday, 6/5/14**
- **Guaranteed Maximum Price (GMP) June 17<sup>th</sup>  
Board meeting**

# New “Center for Alternative Learning”

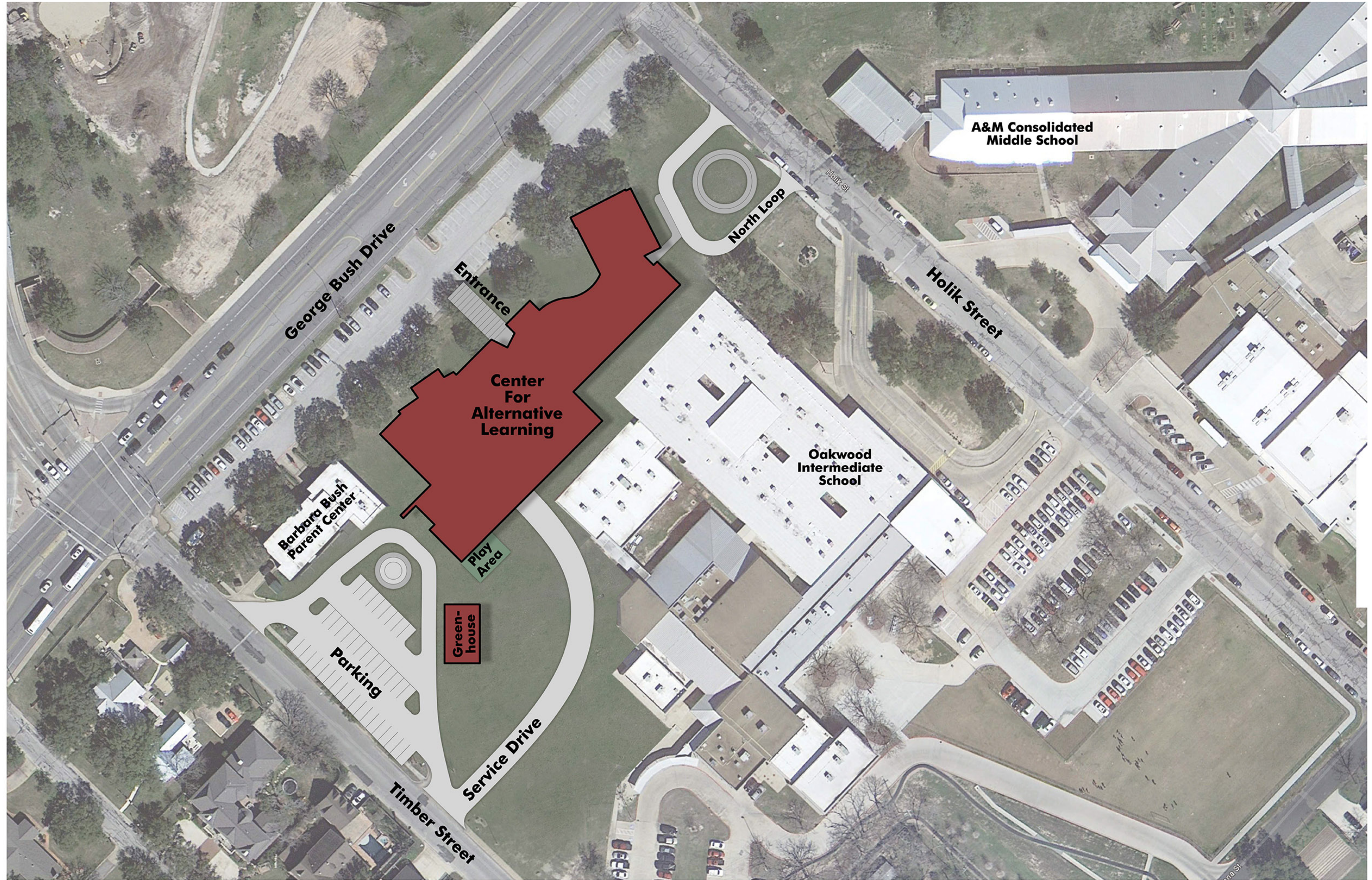
- **Three different processes for this project**
  - **Programming**
    - Arts & Humanities and Multidisciplinary Endorsements to start... can add others as facility evolves
    - Flexible use spaces
    - Technology
  - **Rebranding**
  - **Design**



# CENTER FOR ALTERNATIVE LEARNING

COLLEGE STATION INDEPENDENT SCHOOL DISTRICT

Tuesday, February 11, 2014



● ● ● **SITE PLAN**



# CENTER FOR ALTERNATIVE LEARNING

## COLLEGE STATION INDEPENDENT SCHOOL DISTRICT

Tuesday, February 11, 2014



**1st Floor**



**2nd Floor**

- Administration
- Academic
- Re-Group Rooms
- Collaboration Area
- Independent Living Suite
- Student Activity Area
- Computer Labs
- Art Studio
- Services (Mechanical, Electrical, Restrooms)
- Circulation



● ● ● **SCHEMATIC FLOOR PLAN**





# CENTER FOR ALTERNATIVE LEARNING

## COLLEGE STATION INDEPENDENT SCHOOL DISTRICT

Tuesday, February 11, 2014



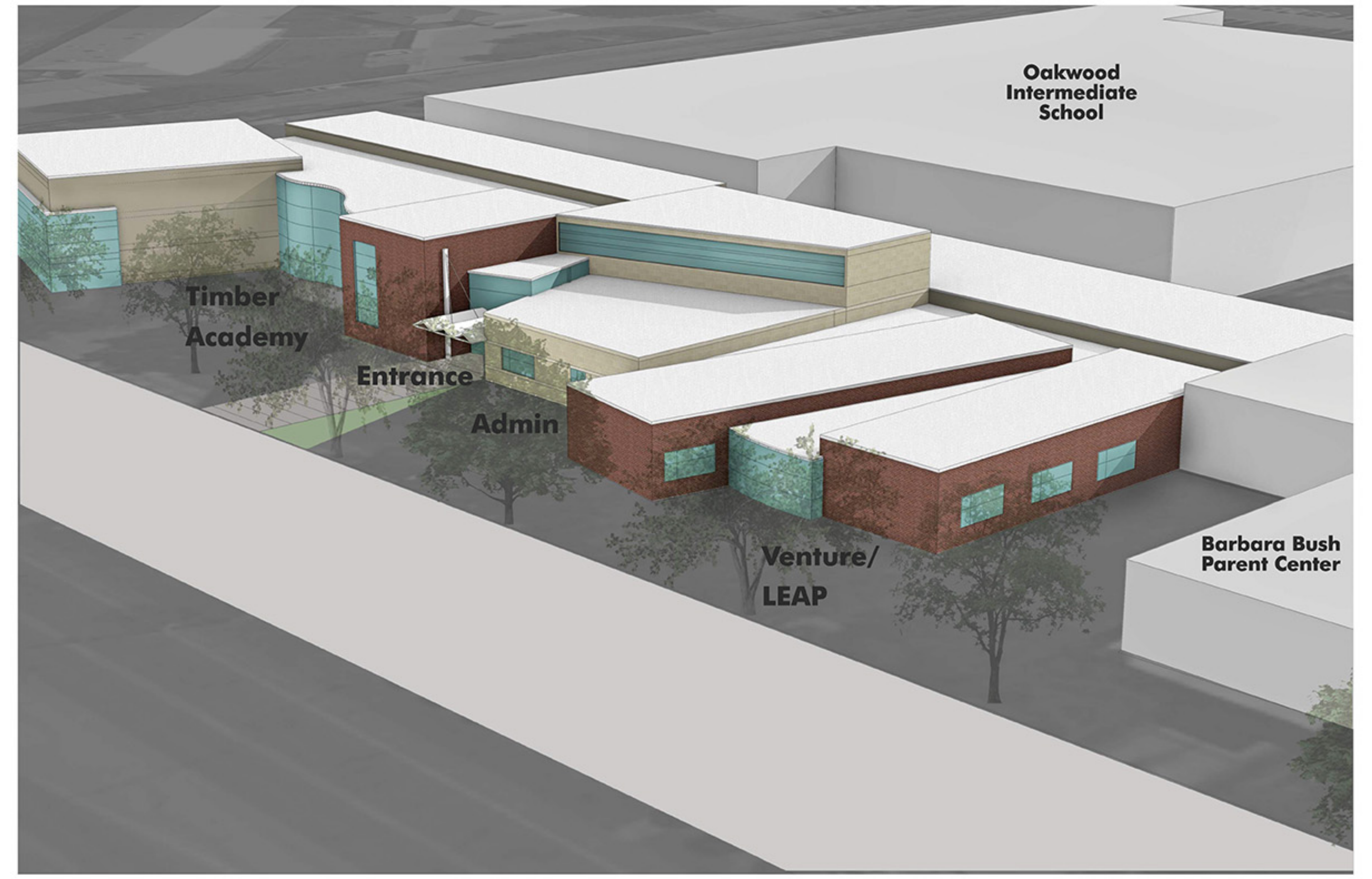
**North Side Perspective**



**South Side Perspective**



**Front Perspective**



**West Side Perspective**

● ● ● **CONCEPTUAL MASS MODEL**





Questions/Comments?